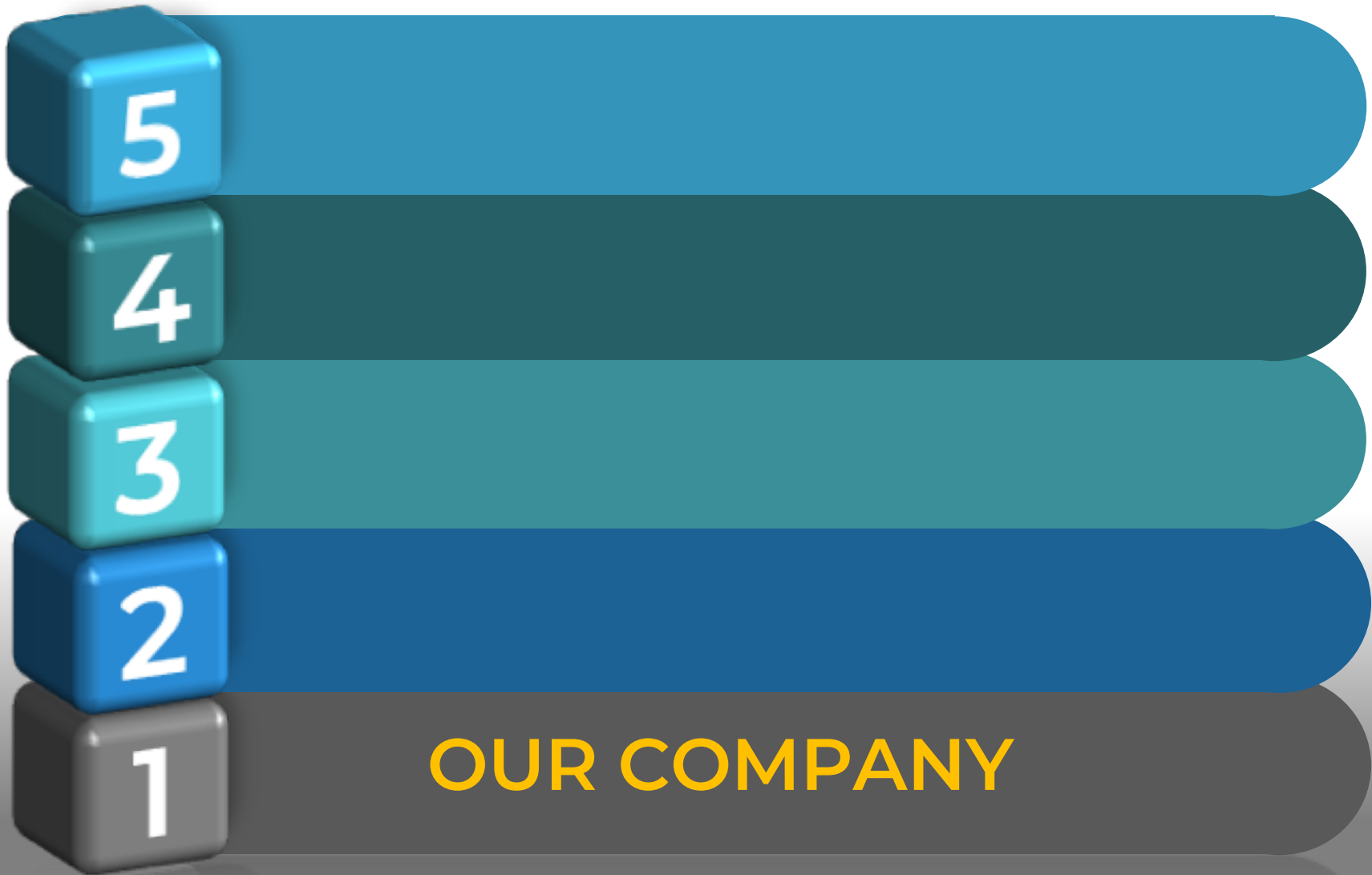


COMPANY PRESENTATION

08.2020







20+ YEARS DOING **THIS ONLY**

Since 1998 and before

AEP has been established in 1998. It soon acquired the ticketing branch of Logitron (today Gilbarco Veeder Root), in operation since 1993, which included the first Italian automatic fare collection systems of Firenze and Prato.

AEP
Ticketing solutions

OUR PREMISES



- FLORENCE (SIGNA)
- GENOA
- BRESCIA (BEDIZZOLE)
- FRANCE, CHAMBÉRY
- ROMANIA, BUCAREST
- AEP PERSONS STABLE IN MILAN AND TURIN
- PRODUCTION 100% IN ITALY:
 - BOLOGNA
 - BRESCIA
 - FLORENCE



IN 2016 AEP HAS ACQUIRED FROM FINMECCANICA THE **MONETICA BRANCH** (FORMERLY ELSAG/SELEX ELSAG – ESTABLISHED 2002)



SIGNA
HEADQUARTER



GENOA
BRANCH



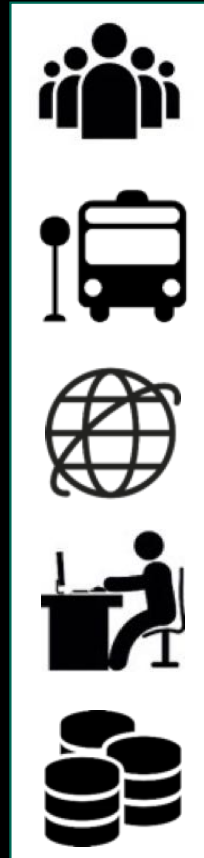
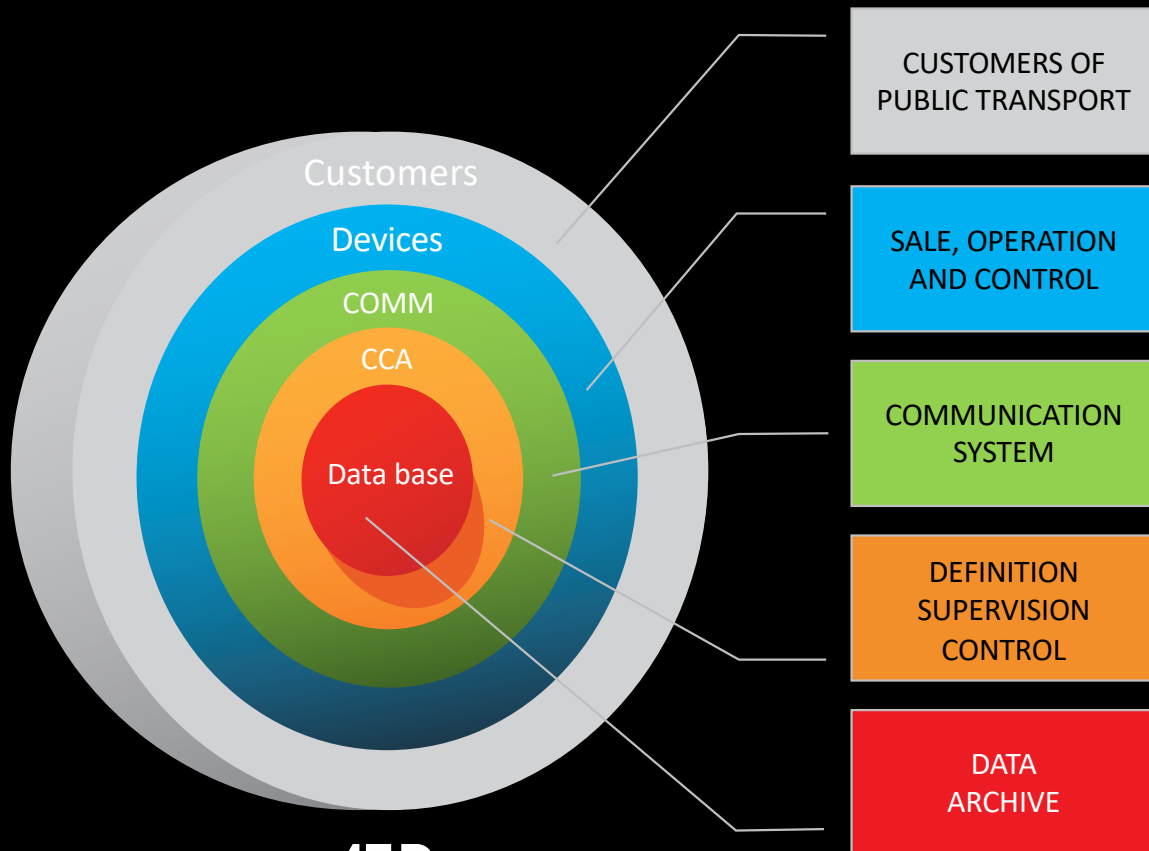
A **DOUBLE** ASSET OF PROVEN SOLUTIONS

AEP
TRADITIONAL

SELEX ELSAG
FINMECCANICA



OUR SOFTWARE SOLUTIONS COVER ALL E-TICKETING AREAS





FOR **ALL-SIZE** e-TICKETING SYSTEMS



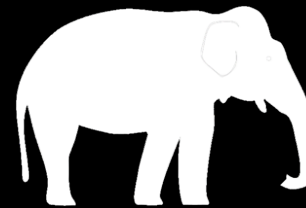
10 BUS



100 BUS



500 BUS



2,000+ BUS



OUR EQUIPMENT

ONE OF THE WIDEST RANGE
IN THE MARKET





FROM A SINGLE SUPPLIER SYSTEMS – EQUIPMENT - SERVICES

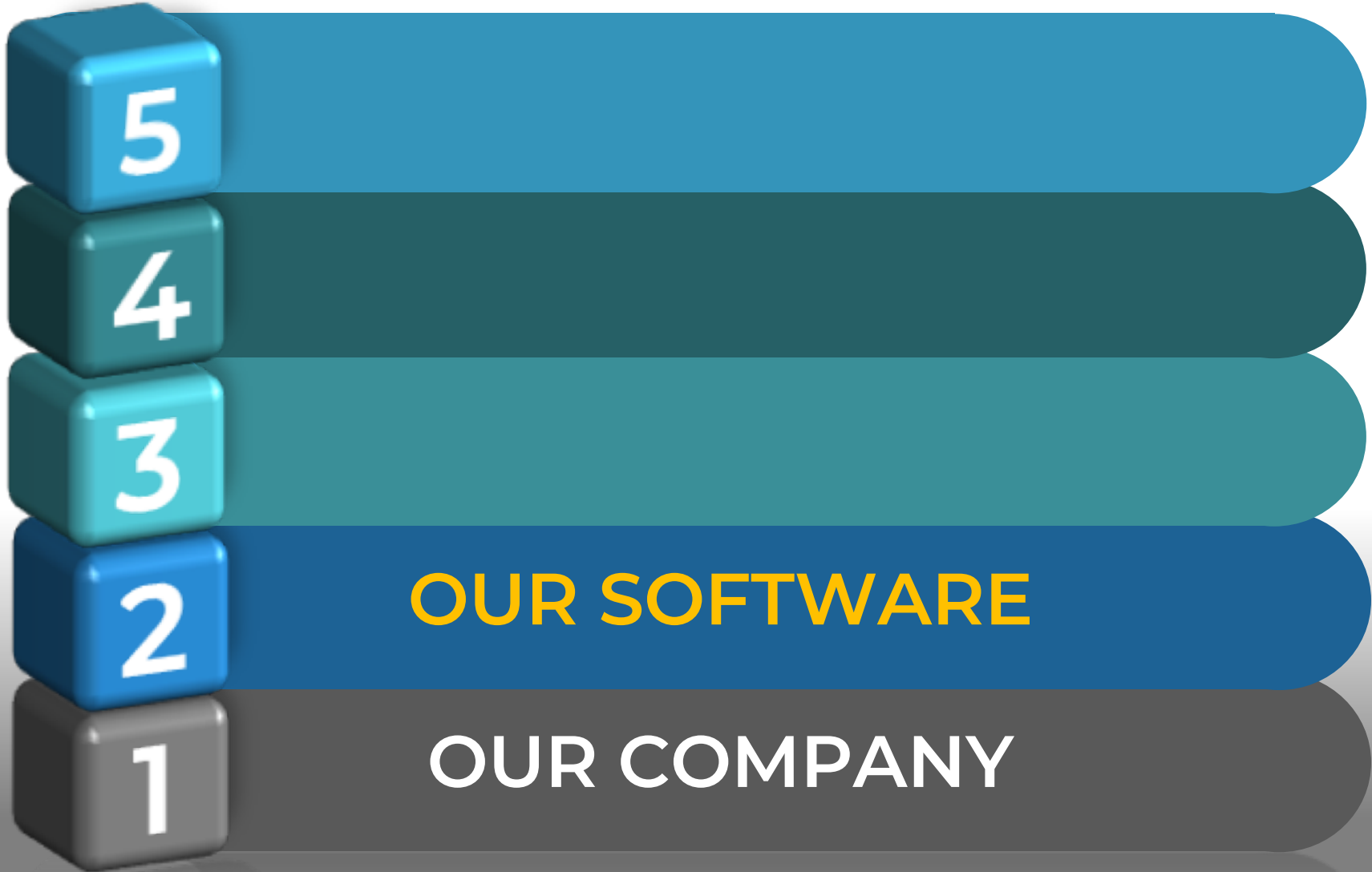


20+ YEARS DOING **THIS ONLY**

AEP systems are language independent

AEP is an international Company. AEP people speak Italia, French, English, German, Polish, Russian, Kazakh, Romanian, etc. Many of them are mother tongue. Documentation is normally written in Italian, French and English.





TRADITIONAL SOLUTIONS



CENTRAL SYSTEMS

SALE SYSTEMS

TICKET OFFICES

RETAILERS

TVMs

STOCK & DISTRIBUTION

FRAUD DETECTION

BUSINESS INTELLIGENCE

FLEET MANAGEMENT

INSPECTORS & FINES

SYSTEM SUPERVISION

DATA COMMUNICATION

ALSO RAILWAY SPECIFIC



INNOVATIVE SOLUTIONS (SOME)



LEADERS IN EMV SOLUTIONS

London everywhere!

The transit payment system according the Transport for London model is an absolute success. AEP is the Italian leader in EMV transit solutions and among the leaders in France. AEP offers full range of equipment, the central system, the user portal, the best fare engine and the payment platform (or the connection to third-party platforms).

Ready to go ...NOW!



AEP EMV SYSTEMS IN OPERATION

#	Who	Where		Urban area of	Line	Since
1	MOM	Treviso	IT	Treviso	Aeroporto Treviso	11/17
2	Filibus	Chartres	FR	Chartres		11/18
3	SADEM Arriva	Torino	IT		Aeroporto Caselle	12/18
4	Tiemme	Grosseto	IT	Grosseto		12/18
5	Tiemme	Siena	IT		Firenze-Siena-San Gimignano	4/19
6	Tiemme	Castiglione	IT	Castiglione della Pescaia		6/19
7	ATAF	Firenze	IT	Firenze		7/19
8	Busitalia	Firenze	IT		Volainbus e The Mall	7/19
9	SITAC Keolis	Chalons	FR	Chalons en Champagne		8/19
10	Tiemme	Siena	IT	Siena		9/19
11	Imagine Keolis	Epinal	FR	Epinal		9/19
12	TADAO Transdev	Lens	FR	Lens		9/19
13	SPL Trans Landes	Dax	FR	Dax		6/20
14	GTT	Torino	IT	Metro e bus Torino		7/20

AEP EMV SYSTEMS **STARTING SOON**

#	Who	Where		Urban area of	Since
15	Marconi Express	Bologna	IT	People Mover Aeroporto (metrò)	9/20
16		Acapulco	Messico	Acapulco	10/20
17	Tper	Bologna	IT	Bologna, Ferrara e provincie	12/20
18	START Romagna	Ravenna	IT	Forlì, Cesena, Ravenna e provincie	12/20
19	SETA	Modena	IT	Modena, Piacenza, Reggio Emilia e provincie	12/20
20	TEP	Parma	IT	Parma e provincia	12/20
21		Galati	Romania	Galati	12/20
22	Mumbai Metro	Mumbai	India	Mumbai	6/21



INNOVATIVE WEB SHOP



AEP ET-WEBS module

It allows users to perform many operations that formerly required the access to ticket offices, e.g. obtaining a personal card. The cards can be delivered also by our new CLM-3 self-service card-issuing machine.



SMART ACCOUNT BASED



A new approach

AEP ET-MOBILE module fulfills exactly the users' requirements:

- App with QR-code optical validation (good for Android and iOS)
- App with NFC reading (Android)
- Third-party Apps integration
- Paper tickets bought from web shop
- Paper tickets pre-issued and distributed to retailers

Can be validated also issued, as well when not always on-line.



Since 1998 and before

AEP has been established in 1998. It soon acquired the ticketing branch of Logitron (today Gilbarco Veeder) in operation since 1993, which included the first Italian automatic fare collection systems of Firenze and Prato.

TOO CONFORTABLE!

Use ATM terminals

Use ATM terminals for the public transport cards. They can perform e-purse top-up or season tickets renewal. AEP ET-RSAM module allows ATM readers to operate without a local SAM module.



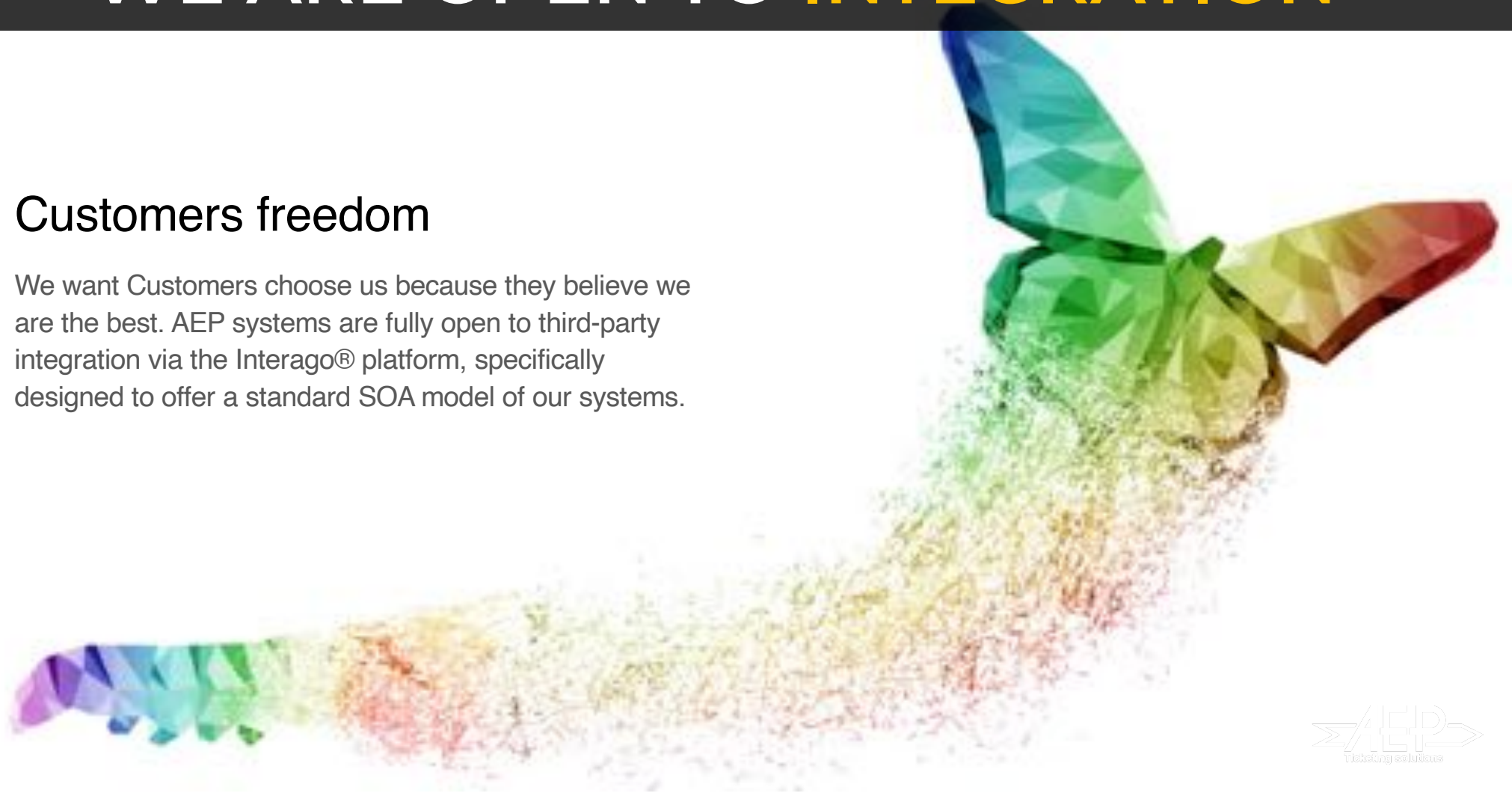
A GOOD SYSTEM CANNOT BE AN ISLAND



WE ARE OPEN TO INTEGRATION

Customers freedom

We want Customers choose us because they believe we are the best. AEP systems are fully open to third-party integration via the Interago® platform, specifically designed to offer a standard SOA model of our systems.

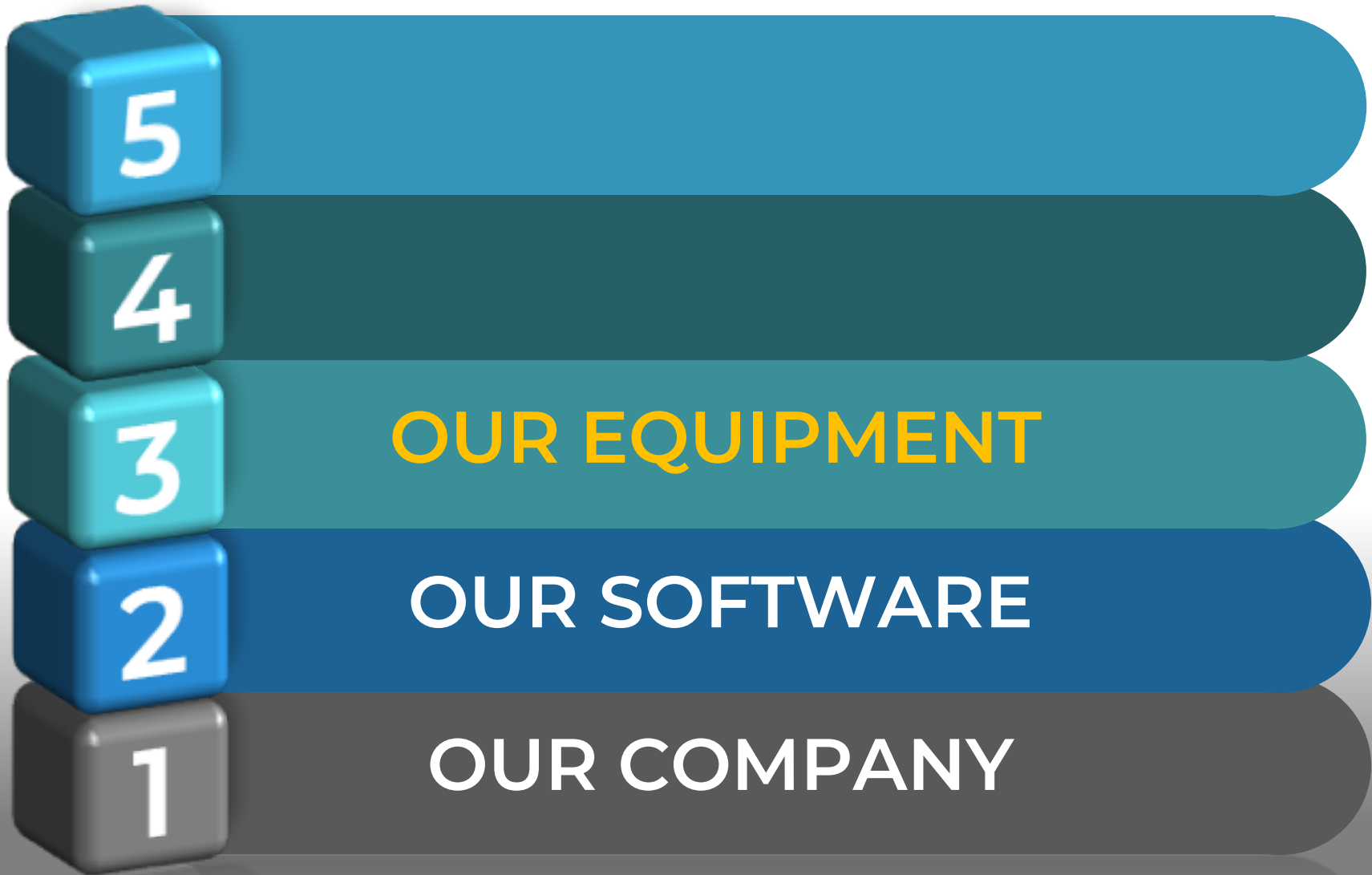


SOFTWARE AS A SERVICE

Don't buy me!

AEP software solutions are now available also in the Software as a Service (SaaS) formula ET-365. You pay only a fixed annual fee that include software, updates and the required services.





TECHNOLOGY OWNERSHIP

A hand is shown interacting with a glowing blue circuit board background. The hand is positioned on the right side, with fingers pointing towards the center. The circuit board is dark blue with glowing blue lines and patterns. The text 'TECHNOLOGY OWNERSHIP' is overlaid on the top part of the image. The word 'TECHNOLOGY' is in white, and 'OWNERSHIP' is in yellow.

- HIGH STANDARDS OF DESIGN AND TESTING
- CONTACTLESS AND MAGNETIC TECHNOLOGIES OWNERSHIP
- INTERNAL TESTING AND CERTIFICATION LABORATORIES

ARE WE **THE BEST?**

Why we are better

Every company says "I am better", but which are the differences between common commercial products and AEP devices? Ask for our document 740557 if you want to know.



EXAMPLES OF OUR EQUIPMENT RANGE



FUTURA 3ALX



FUTURA 3B



CDB-6 PLUS



CDB-4 PLUS



TVM RTVM-T



TVM RTVM-I

NEW: DBOX

Order in ticket offices

A unit that embeds a thermal printer, a contactless reader, an optical reader and many USB ports to rationalize the wiring of the ticket office workplaces



NEW: ONE

EMV cards only

One is a micro-validator for EMV cards only. It can be used in new systems or as an add-on for older or third-party systems. Ready to be integrated in AEP ET-PASS back-office and payment platforms.



NEW: CLM-3





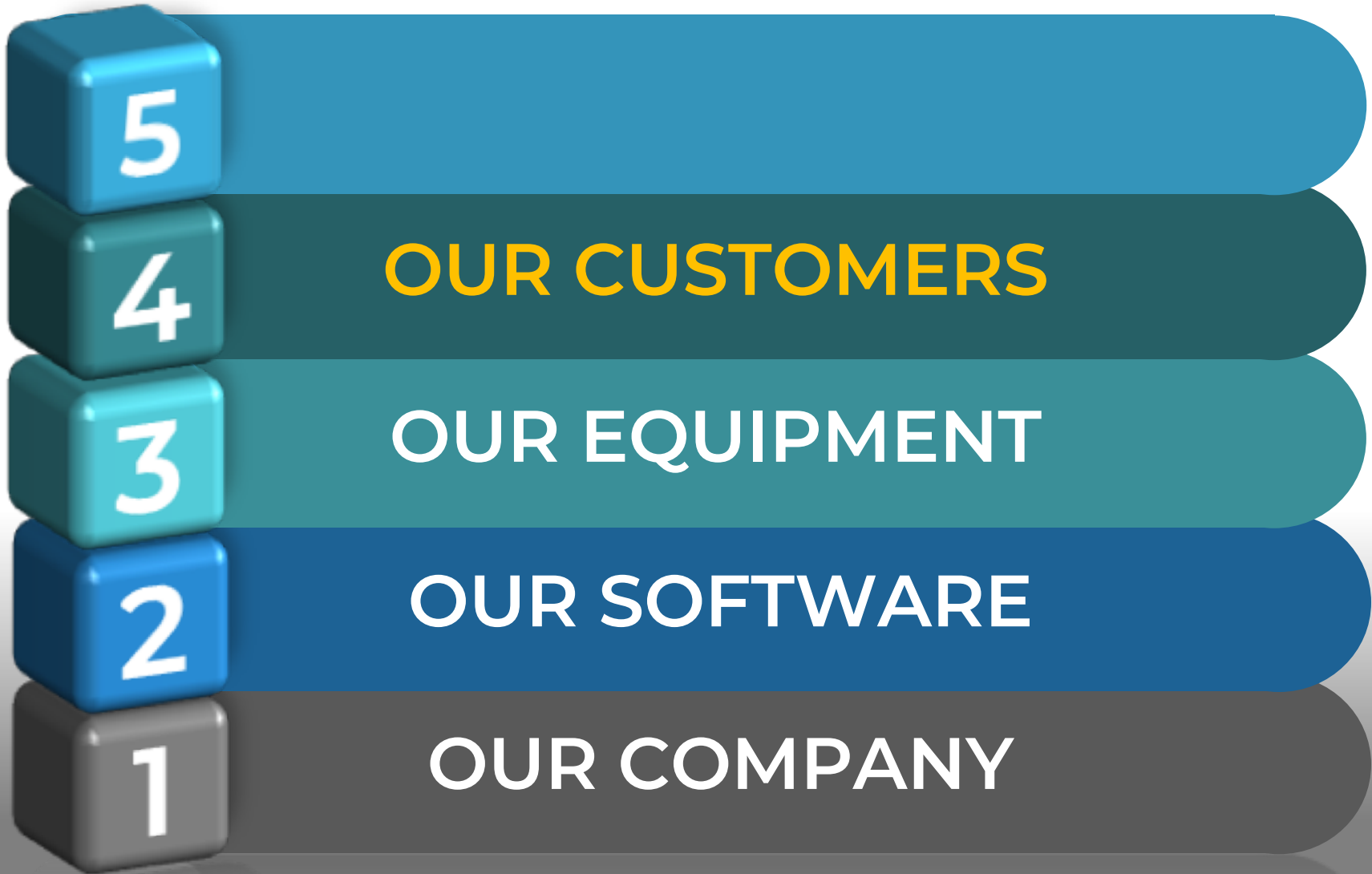
NEW
FUTURA 3G



aepro

The aepro line

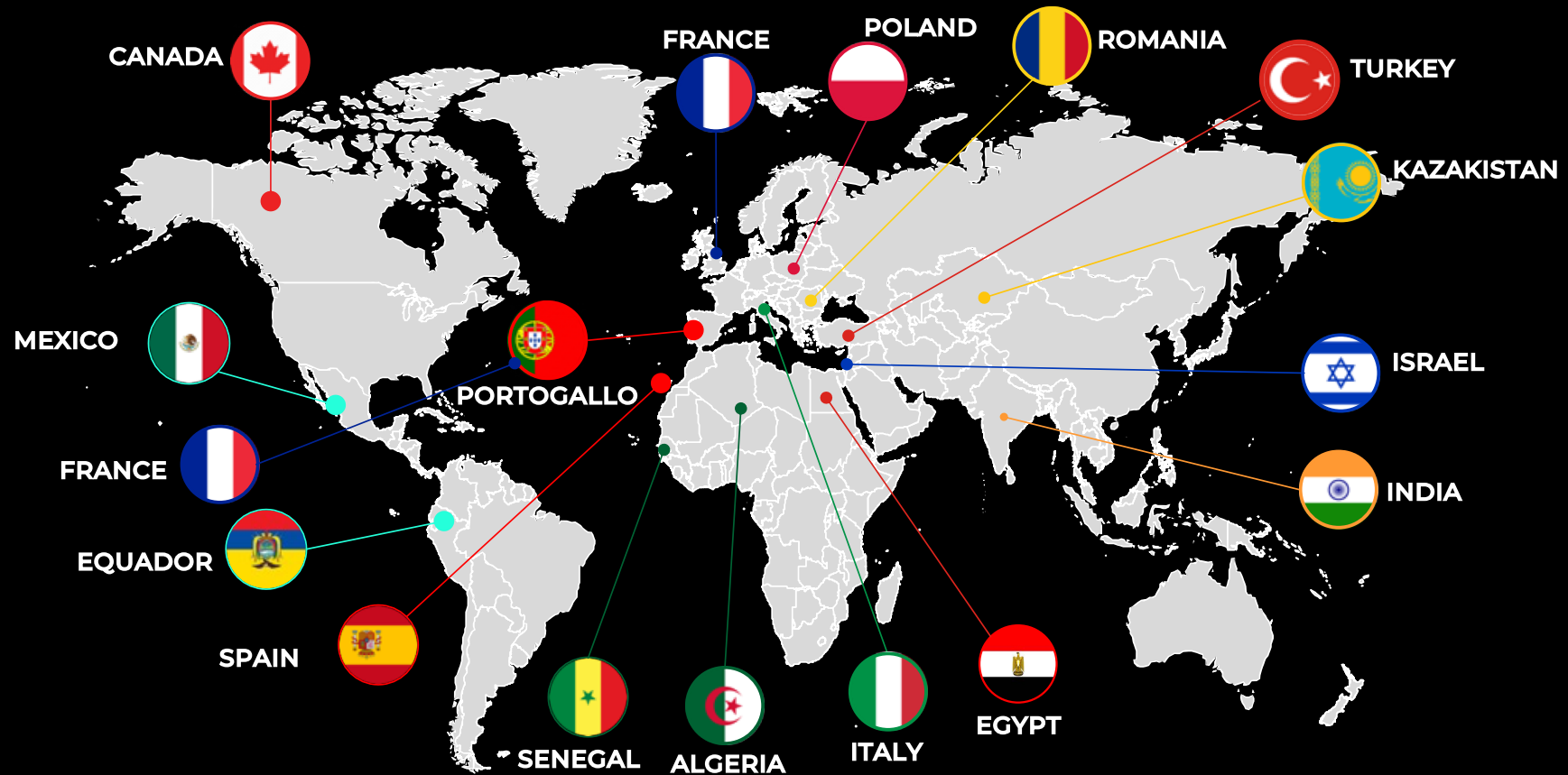
AEP equipment from aepro line is available in OEM customizable versions also under customer's brand





**MORE THAN 600 CUSTOMERS IN PUBLIC TRANSPORT
WE CAN'T PRESENT THEM ALL**

50+ SYSTEMS, 65,000+ DEVICES IN THE WORLD



MAIN CUSTOMERS IN ITALY

- **A**
- AMAG, Alessandria
- ANM, Naples
- APT, Gorizia
- Arriva SADEM, Turin
- Arriva, Trieste Trasporti
- ARST, Cagliari
- AST, Palermo
- ATAC, Rome
- ATAF, Florence
- ATAP, Biella
- ATAP, Pordenone
- ATM, Milan
- ATP, Nuoro
- ATP, Sassari
- ATV, Verona
- ATVO, S.Donà
- Autoguidovie, Milan
- Automobilistica Perego, Tirano
- **B**
- Busitalia
- **C**
- CAP Prato
- CO.ER.BUS Lugo
- CTP, Naples
- CTPI, Varese
- CTT Tuscany
- **E**
- Extra.to, Turin
- **G**
- GEST-RATP, Florence
- GTT, Turin
- **M**
- Metronapoli
- MOM, Treviso
- **S**
- SAF, Udine
- SEAM, Cortina
- SETA, Modena
- START Romagna
- SUN, Novara
- SVT, Vicenza
- **T**
- TPER, Bologna
- TEP, Parma
- Tiemme Tuscany
- Trenord, Milan
- Trentino Trasporti
- **U**
- Umbria Mobilità
- etc.



FRANCE

THE SECOND HOME OF AEP



MORE THAN 20 CUSTOMERS



📍 Systèmes

- Lens
- Longwy
- Bar-le-Duc
- Chalons en Champagne
- Épinal
- Belfort
- Annonay
- Limoges
- Fort-de-France (Martinique)
- Bézier
- Dax
- Angoulême
- Rochefort
- Poitiers
- Le Mans
- Chartres
- Pays de la Loire

📍 Equipements

- Douai
- Pontivy
- Châtelleraut
- Saint-Jean-de-Luz
- Ajaccio

★ Systèmes Régional

- Normandie (scolaire)
- Région centre Val de Lorie (nouvelle)
- Bourgogne-Franche Comté (sous fournisseur Mobigo)

**CUSTOMERS
IN FRANCE**

SINCE 2005

221 STATIONS

2.210 BUS

2.498 GATE

17 DEPOTS

8 PARKINGS

MILAN, ITALY
THE BIGGEST

3 5 0 0 0 0 0

TRANSACTIONS PER DAY

AEP
Ticketing solutions



COVID-19: SYSTEM FOR LIMITING THE NUMBER OF PASSENGERS IN METRO STATIONS



**130 STATIONS
UPDATED
IN TIME OF
ABSOLUTE
RECORD!**



21 COMPANIES

2,360 BUS
AND TRAM

1,950
RETAILERS

40 TICKET
OFFICES

36 DEPOTS

60,000
NFC APP



TURIN, ITALY
THE MOST "MOBILE"

vts  powered

7 0 0 0

 **AEP**
Ticketing solutions

AEP DEVICES

10 COMPANIES

1,000 BUS

30 SELF-SERVICE

10 TICKET OFFICES

24,000,000
TRX / MONTH

8,000 DEVICES

ASTANA, KAZAKHSTAN
THE FARTHEST

8 7 0 0 0 0

SMART CARD

AEP
Ticketing solutions



700
VALIDATORS

80 RETAILERS

70 SELF
SERVICE



FLORENCE, ITALY
THE CLOSEST



SILESIA REGION, POLAND THE VASTEST

21 CITIES
35 COMPANIES

1,500 BUS AND
TRAM

800 POINTS
OF SALE

40 TICKET
OFFICES

223 PARK
METERS

700,000
CARDS

8 0 0 0

AEP DEVICES



LINES 2 AND 7 MUMBAI METRO



EGYPTIAN RAILWAYS

ONE OF THE LARGEST
ECONOMIC INSTITUTIONS IN
EGYPT
AND IN THE ARAB WORLD

THE LARGEST IN THE FIELD OF
PASSENGER AND GOODS
TRANSPORT SERVICES

500M PASSENGERS / YEAR



SNTF ALGERIAN RAILWAYS

4,575 KM AND 217 STATIONS

33M PASSENGERS / YEAR

SEAT OR BUNK RESERVATION

IN THE STATIONS, TRAVEL AGENCIES, THE
INTERNET PORTAL, ON BOARD THE TRAIN ...
PREFERENCES FOR MEAL, AIR
CONDITIONING, ANIMALS ETC.

CENTRALIZED NETWORK DEFINITIONS

LINES, TRAIN COMPOSITION, FARES,
TIMETABLES...

ACCOUNTING

ALSO AT SINGLE STATION LEVEL
MANAGEMENT OF STATIONS EVEN
NOT PERMANENTLY CONNECTED



4 COMPANIES

CENTRAL
SYSTEM

WEB PORTAL

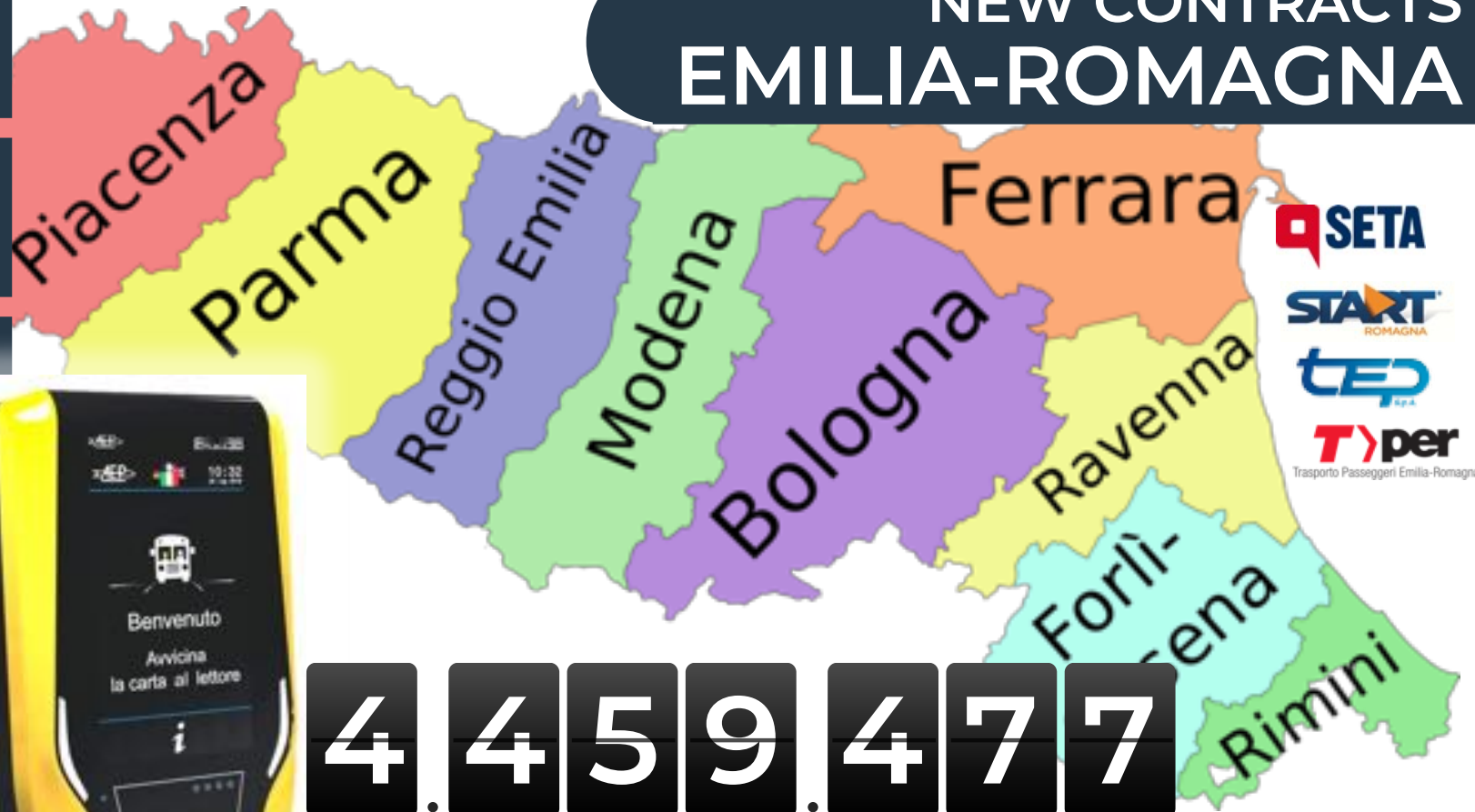
INSPECTION
SYSTEM

1,520 F3B EMV
VALIDATORS

OPTION FOR
+3,065 UNITS



NEW CONTRACTS EMILIA-ROMAGNA



4.459.477

INHABITANTS



(REPLACING EXISTING
CONDUENT EQUIPMENT)

5

COME AND SEE!

4

OUR CUSTOMERS

3

OUR EQUIPMENT

2

OUR SOFTWARE

1

OUR COMPANY



**COME WITH US
TO VISIT OUR SYSTEMS!**



TICKETING SYSTEMS ARE NOT ALL THE SAME



g.becattini@aep-italia.it